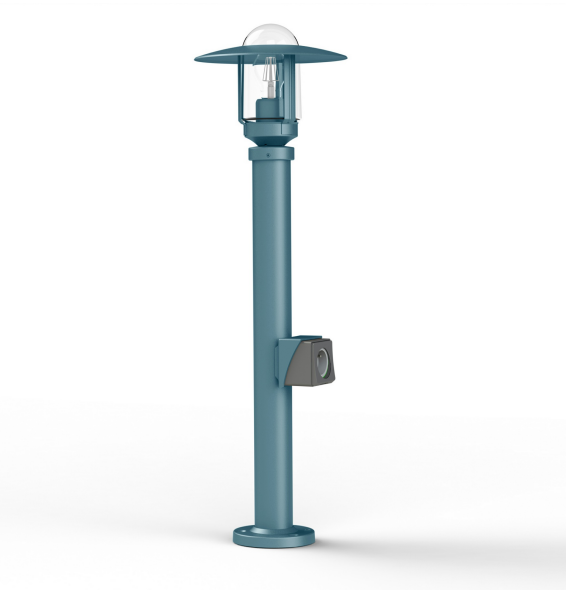


Technical data

Rated voltage	200 to 240 - 50/60Hz
Input voltage range	230 - 250 V AC
Driver output	-
Alimentation output	-
Class	1
IP	44
IK	-
Diffuser	Clear glass
Bulb cover	-
Source	E27
Color temperature real output	-
Real light output	- lm
Total consumption	- W
Energy class	Classe de la lampe (non fournie)
Luminous efficacy	-
IRC	-
SDCM	-
Optic	-
Dimmable	-
Ta	-
Led lifetime	-
Ambient temperature range	-10 ~50°C
UGR	-
ULR	-
THDI	-
Fixing kit	Yes
With sensor	No
With IP55 socket	Yes

[Download the installation manual](#)



Materials and finishes

Material	aluminium
Colour	Blue - 111
Colour of the support	Blue - 111

Logistic data

Product dimensions	H.851 L.251 P.251
Net weight	2.370 Kg
Gross weight	3.670 Kg
Package dimensions 1	H.630 L.380 P.240

Certifications and warranties

CE	Yes
UL	No
EAC	Yes
RoHS	Yes
ENEC	No
Anti-corrosion	25 years (on Aluminium)
Technical	5 years
Electronics	5 years