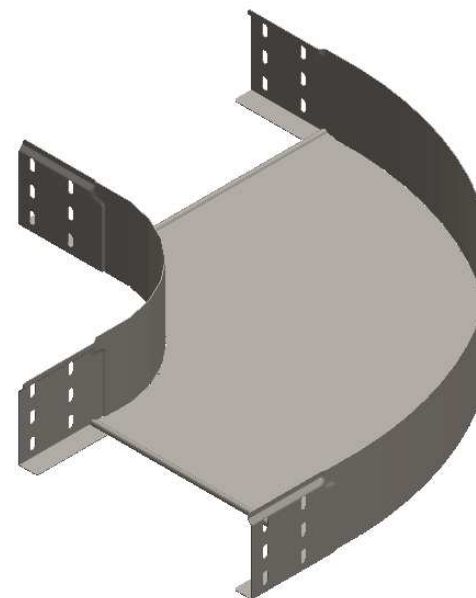
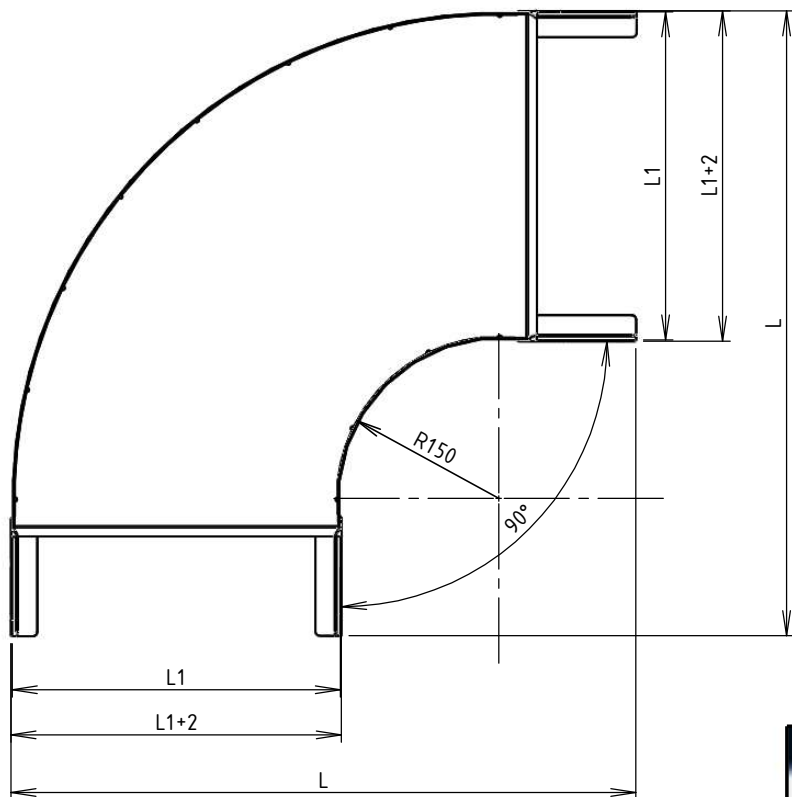


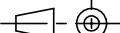


| CODE | REF. | L (mm) | L1 (mm) | POIDS NET (Kg) | COLISAGE (NR) |
|-----------|------|--------|---------|----------------|---------------|
| MVG1120NL | 305 | 578.4 | 303.8 | 2,811 | 6 |
| MVG1120NP | 395 | 668.4 | 393.8 | 3,604 | 4 |
| MVG1120NU | 515 | 788.4 | 513.8 | 4,815 | 2 |
| MVG1120NX | 605 | 878.4 | 603.8 | 5,863 | 2 |



Matière cornière: BD REFENDUE 1,00 DC01 - NF EN 10130/10131
 Matière fond: FEUILLE 1,00 DC01 - NF EN 10130/10131
 Revêtement: GAC - Galvanisation à chaud par immersion selon NF EN 1461
 Dimensionnel garanti avant galvanisation

| | | | | | |
|---|---|---------------|-----------------------------|---|----------------|
|   Usine de Liernais BP 1 21430 LIERNAIS TEL.: 03.80.90.51.00 FAX: 03.80.84.43.66 | DESIGNATION: | | COUDE 90° BRN95 NP R150 GAC | | |
| | Propriété GEWISS France - Toute reproduction et utilisation tierce requièrent l'accord écrit de GEWISS France | | | | |
| | DESSINE PAR: | DOS SANTOS A. | VERIFIE PAR: | LEGUY C. | FORMAT A4 H |
| | DATE: | 14/02/2020 | ECHELLE: | 1:7 | |
| N°: | MVG1120NL à MVG1120NX_01 | | |  | |