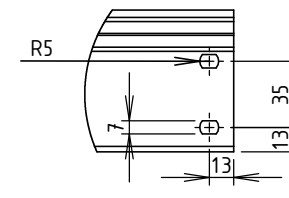
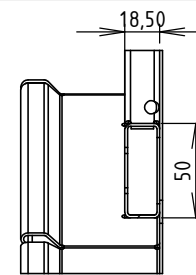
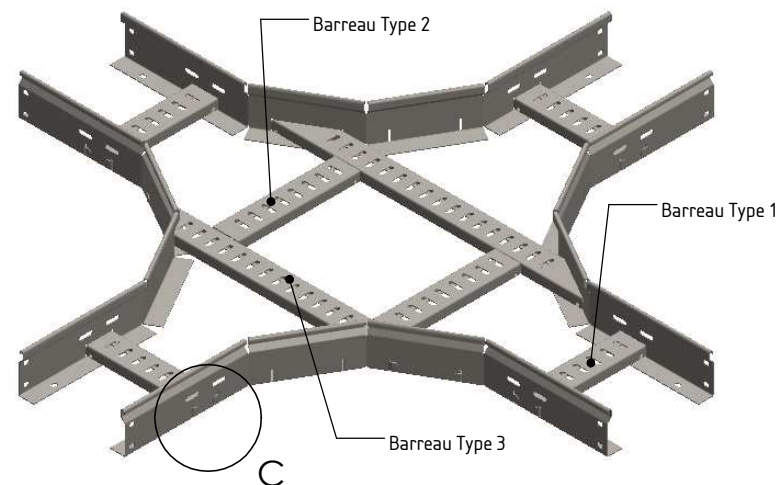


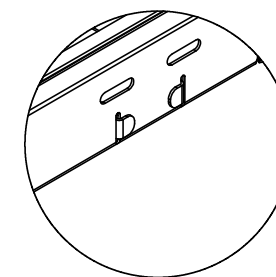
COUPE B-B
ECHELLE 1 : 4



DÉTAIL A
ECHELLE 1 : 4



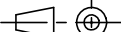


DÉTAIL C
ECHELLE 1 : 4



Matière: TÔLE NOIRE 1.50 S235 JR
Revêtement: GAC - NF EN 10461

| CODE | L (mm) | L1 (mm) | E1 (mm) | E2 (mm) | Poids (kg) | NB barreaux Type 2 |
|---------|--------|---------|---------|---------|------------|--------------------|
| MV97201 | 100 | 1000 | 250 | 225 | | 2 |
| MV97202 | 200 | 1100 | 300 | 250 | | 2 |
| MV97203 | 300 | 1200 | 300 | 300 | | 2 |
| MV97204 | 400 | 1300 | 250 | 250 | | 3 |
| MV97205 | 500 | 1400 | 275 | 275 | | 3 |
| MV97206 | 600 | 1500 | 300 | 300 | | 3 |

| | | | | |
|---|-------------------|----------|--------------------|---|
|   Usine de Liernais BP 1 21430 LIERNAIS TEL.: 03.80.90.51.00 FAX: 03.80.84.43.66 | DESIGNATION: | | CROIX EAC ML75 GAC | |
| | DESSINE PAR: | BONIN G. | VERIFIE PAR: | BERGEROT D. |
| DATE: | 16/10/2015 | ECHELLE: | 1:10 | FORMAT A4 H |
| N°: | MV97201 à MV97206 | | |  |