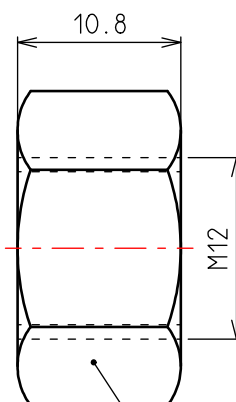
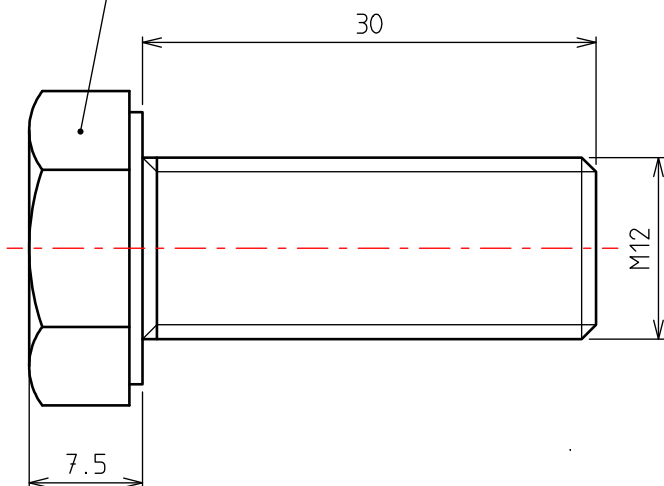


FICHE TECHNIQUE

VIS HM12x30




ECROU HU M12

Poids net: 4.400 Kg/100 pièces

Colisage: par 100 pièces

Matière: Acier - NF EN ISO 898-1/898-2

Revêtement: GEOMET GRIS ARGENT - NF EN ISO 10683

	DESIGNATION:			BOULON HM12x30 GEOMET
	Usine de Liernais BP 1 21430 LIERNAIS TEL: 03.80.90.51.00 FAX: 03.80.84.43.66		DESSINE PAR: BERGEROT d.	
		DATE: 24/08/2011	ECHELLE: 2/1	FORMAT A4V
		N°:	MV66214	