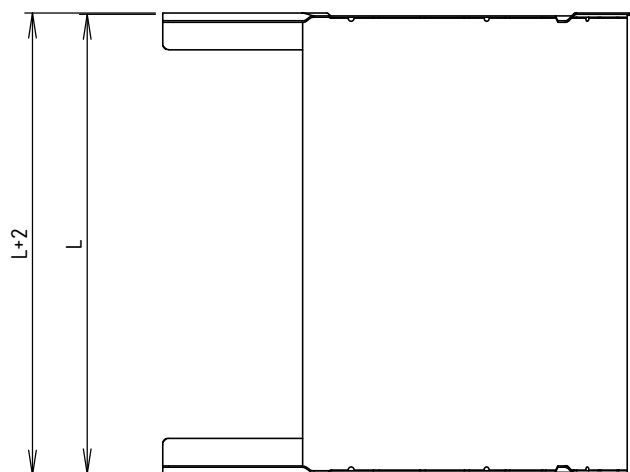
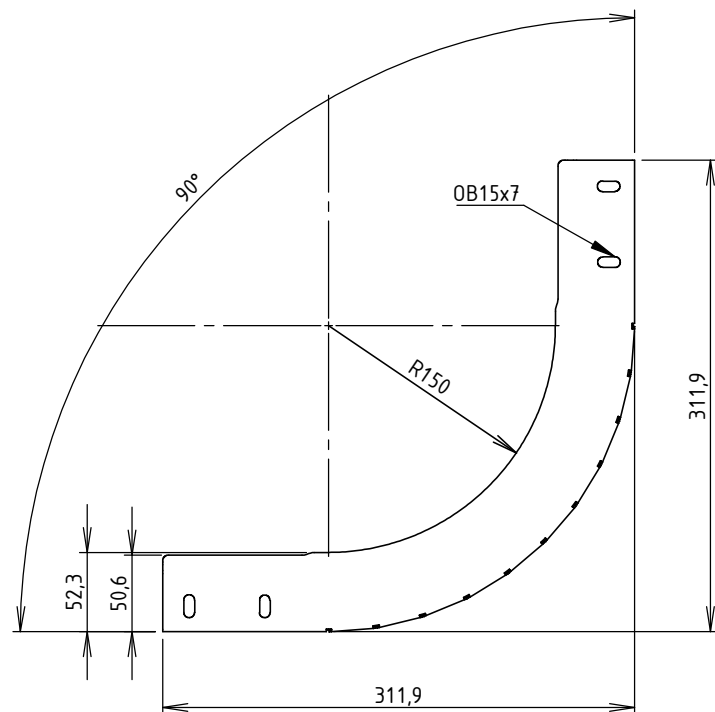




CODE	REF.	L (mm)	POIDS NET (Kg)
MVG1710GL	305	303.8	1,378
MVG1710GP	395	393.8	1,612
MVG1710GU	515	513.8	1,923
MVG1710GX	605	603.8	2,156



Colisage: 2 pièces
 Assemblage réalisé par clinchage
 Matière cornière: FEUILLE 1,00 DX51D + Z275 - NF EN 10143/10346
 Matière fond: FEUILLE 0,90 DX51D + Z275 - NF EN 10143/10346
 Revêtement: Z275 - NF EN 10346

  Usine de Liernais BP 1 21430 LIERNAIS TEL.: 03.80.90.51.00 FAX: 03.80.84.43.66	DESIGNATION:			FORMAT A4 H
	COUDE CONCAVE 90° BRN50 NP R150 Z275			
	DESSINE PAR: DOS SANTOS A.	VERIFIE PAR: LEGUY C.		
	DATE: 12/02/2020	ECHELLE: 1:5		
N°:	MVG1710GL à MVG1710GX_01		