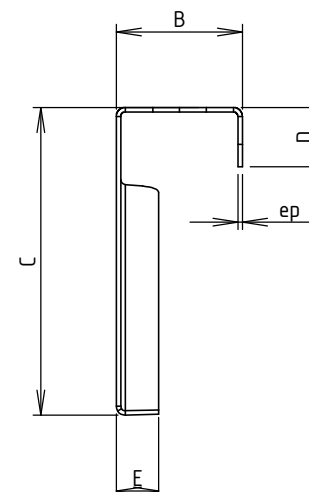
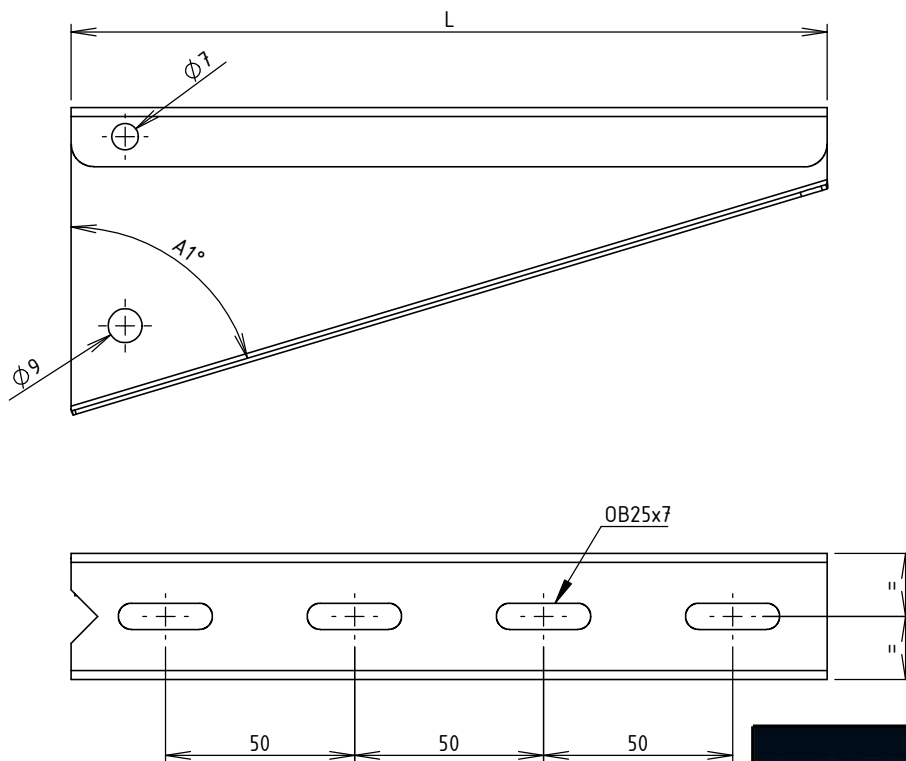
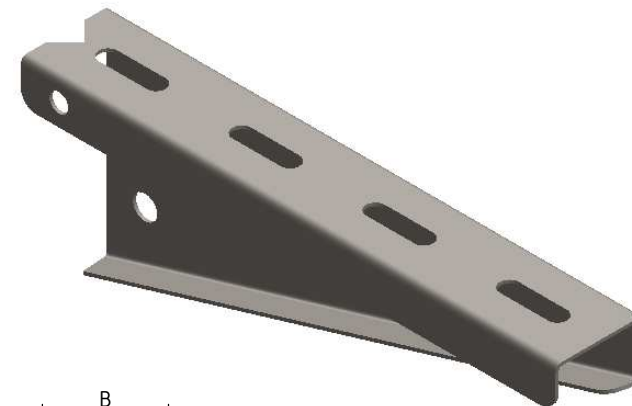


CODE	L (mm)	ep (mm)	B (mm)	C (mm)	D (mm)	E (mm)	A1°	MATIERE	POIDS NET (Kg)	CPS (daN/cons)	COLISAGE (NR)
MV60230	150	1.0	33	80.65	15.5	11	68.2	FEUILLE 1.00 DC01	0.128	85	100
MV60231	200	1.2	33.4	81.35	15.7	11.2	73.3	FEUILLE 1.20 DC01	0.202	85	80
MV60232	250	1.2	33.4	81.5	15.7	11.2	76.5	FEUILLE 1.20 DC01	0.254	85	50
MV60233	350	1.5	34	97.3	16	11.5	80.3	FEUILLE 1.50 S235 JR	0.512	100	25
MV60234	450	2.0	35	98.35	16.5	12	82.4	FEUILLE 2.00 S235 JR	0.864	90	20
MV60235	550	2.0	35	98.4	16.5	12	83.8	FEUILLE 2.00 S235 JR	1.057	85	18
MV60236	650	2.0	35	98.45	16.5	12	84.7	FEUILLE 2.00 S235 JR	1.248	85	16



Revêtement: GAC - Galvanisation à chaud par immersion selon NF EN 1461  
 Dimensionnel garanti avant galvanisation  
 CPS: Charge admissible - NF EN 61537

**GEWISS**  
**MAVIL**  
 Usine de Liernais  
 BP 1  
 21430 LIERNAIS  
 TEL.: 03.80.90.51.00  
 FAX: 03.80.84.43.66

DESIGNATION:		CONSOLE S.U TYPE 40 GAC	
DESSINE PAR:	BERGEROT D.	VERIFIE PAR:	LEGUY C.
DATE:	19/07/2018	ECHELLE:	1:2
N°:	MV60230 à MV60236		FORMAT A4 H

