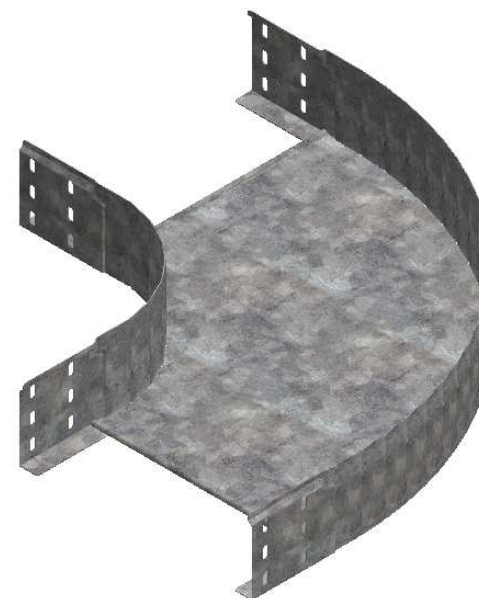
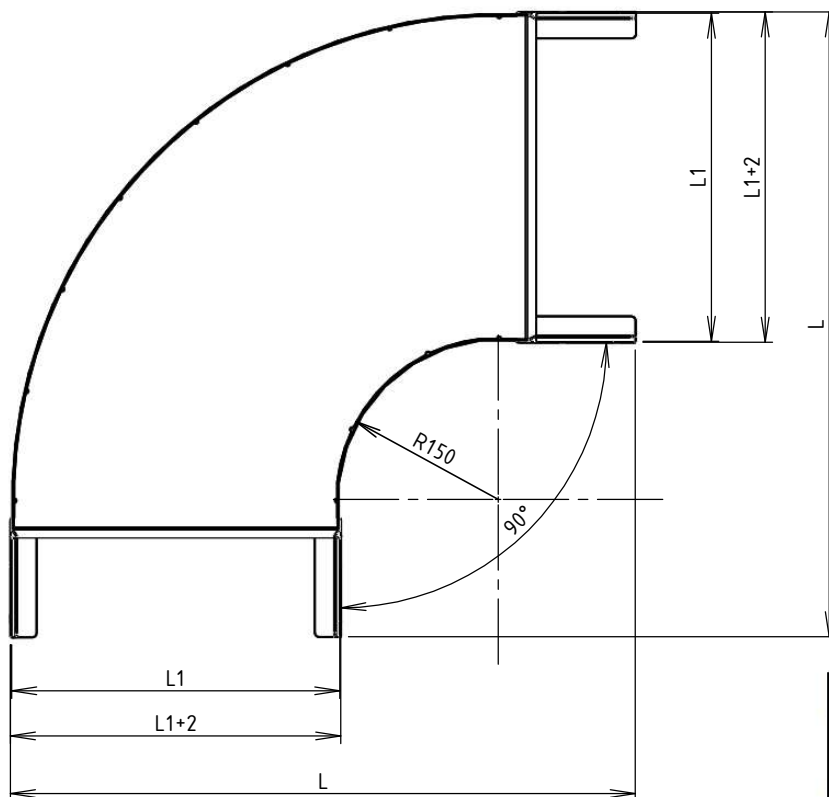
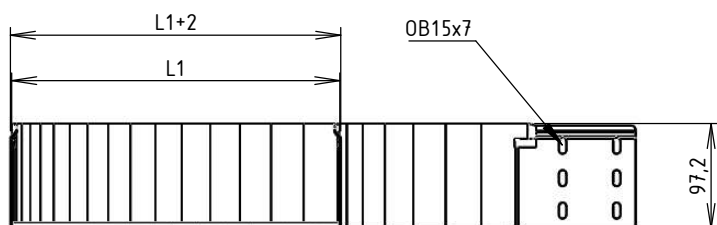




CODE	REF.	L (mm)	L1 (mm)	POIDS NET (Kg)	COLISAGE (NR)
MVG1110NL	305	578.4	303.8	2,558	6
MVG1110NP	395	668.4	393.8	3,253	4
MVG1110NU	515	788.4	513.8	4,318	2
MVG1110NX	605	878.4	603.8	5,236	2



Assemblage réalisé par clinchage  
 Matière cornière: BD REFENDUE 1,00 DX51D + Z275 - NF EN 10143/10346  
 Matière fond: FEUILLE 0,90 DX51D + Z275 - NF EN 10143/10346  
 Revêtement: Z275 - NF EN 10346

  Usine de Liernais BP 1 21430 LIERNAIS TEL.: 03.80.90.51.00 FAX: 03.80.84.43.66	DESIGNATION:		COUDE 90° BRN95 NP R150 Z275		
	Propriété GEWISS France - Toute reproduction et utilisation tierce requièrent l'accord écrit de GEWISS France				
	DESSINE PAR:	DOS SANTOS A.	VERIFIE PAR:	LEGUY C.	FORMAT A4 H
	DATE:	12/02/2020	ECHELLE:	1:7	
N°:	MVG1110NL à MVG1110NX_01				