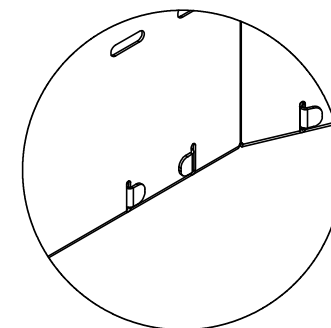
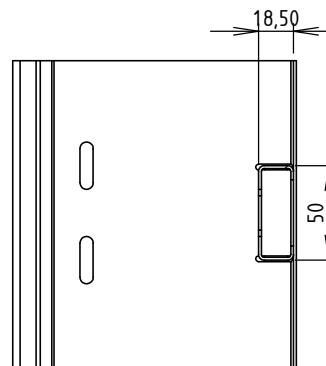
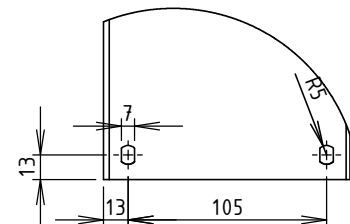


COUPE C-C
ECHELLE 1 : 4



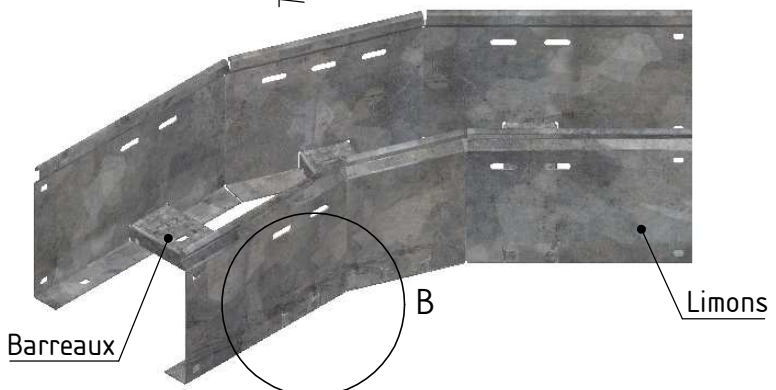
DÉTAIL B
ECHELLE 1 : 4



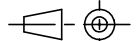
DÉTAIL D
ECHELLE 1 : 4



CODE	L (mm)	L1 (mm)	L2 (mm)	Poids (kg)
MV93131	100	294	538.9	2.82
MV93132	200	394	609.6	3.23
MV93133	300	494	680.3	3.71
MV93134	400	594	751	4.29
MV93135	500	694	821.75	4.70
MV93136	600	794	892.5	5.15

Matière: TÔLE GALVA 1.50 DX51D + Z275
 Revêtement: Z275 - NF EN 10346



  Usine de Liernais BP 1 21430 LIERNAIS TEL.: 03.80.90.51.00 FAX: 03.80.84.43.66	DESIGNATION:		COUDE 135° EAC ML150 Z275	
	DESSINE PAR:	BONIN G.	VERIFIE PAR:	BERGEROT D.
	DATE:	26/10/2015	ECHELLE:	1:7
	N°:	MV93131 à MV93136		

FORMAT
A4 H