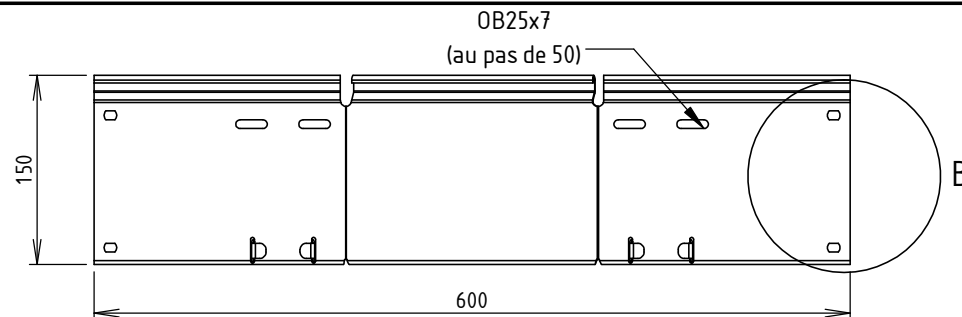
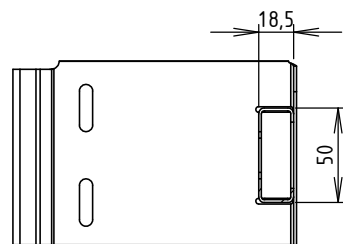


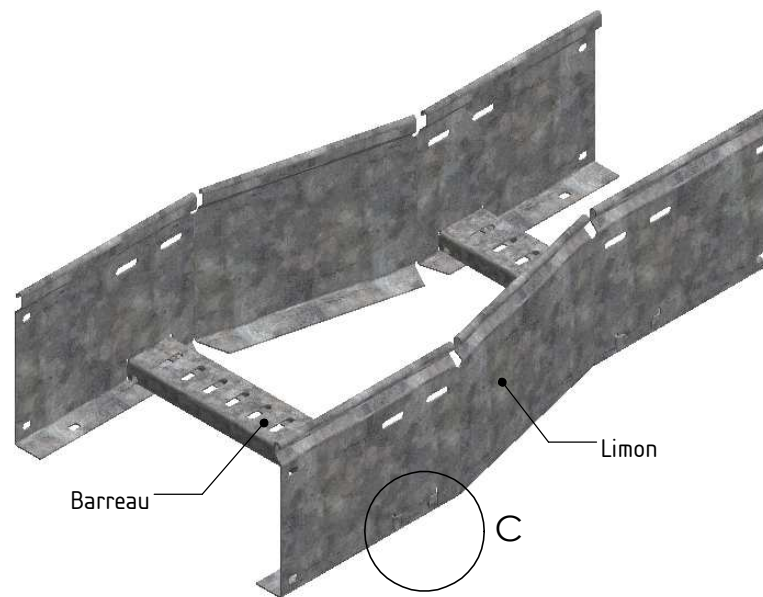
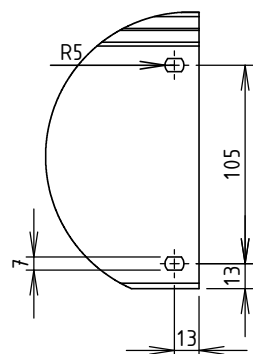
DÉTAIL C
ECHELLE 1 : 4



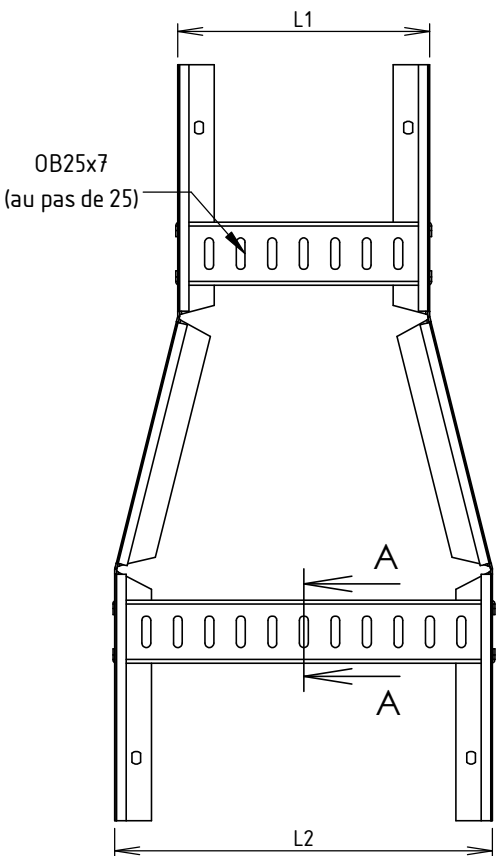
COUPE A-A
ECHELLE 1 : 4



DÉTAIL B
ECHELLE 1 : 4



Matière: TÔLE GALVA 1.50 DX51D + Z275
Revêtement: Z275 - NF EN 10346



| CODE | L1 (mm) | L2 (mm) | Poids (kg) |
|---------|---------|---------|------------|
| MV98132 | 100 | 200 | 2.93 |
| MV98133 | 200 | 300 | 3.11 |
| MV98134 | 300 | 400 | 3.35 |
| MV98135 | 400 | 500 | 3.56 |
| MV98136 | 500 | 600 | 3.73 |



Usine de Liernais
BP 1
21430 LIERNAIS
TEL.: 03.80.90.51.00
FAX: 03.80.84.43.66

| | | | |
|-------------------------------|-------------------|--------------|-------------|
| DESIGNATION: | | | |
| REDUCTION CENT EAC ML150 Z275 | | | |
| DESSINE PAR: | BONIN G. | VERIFIE PAR: | BERGEROT D. |
| DATE: | 03/11/2015 | ECHELLE: | 1:6 |
| N°: | MV98132 à MV98136 | | FORMAT A4 H |

