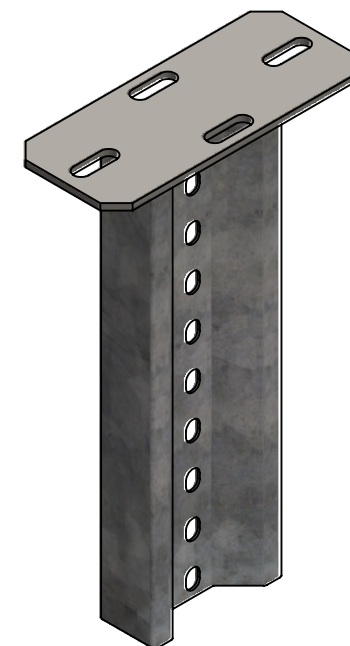
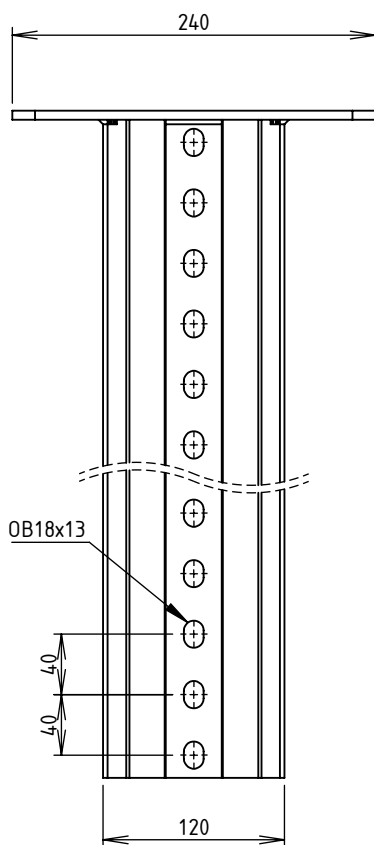
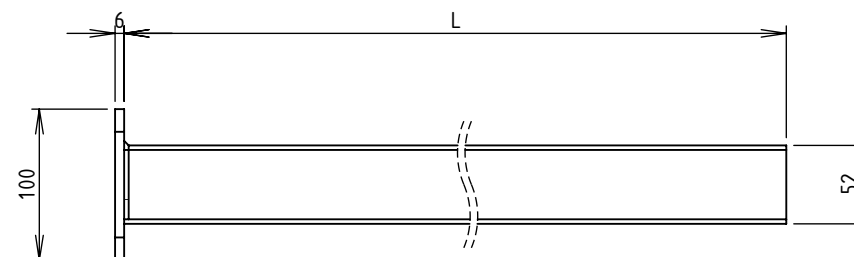
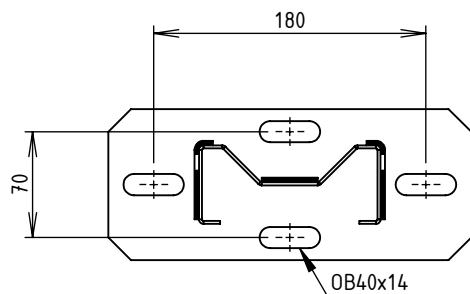




CODE	REF.	DESIGNATION	L (mm)	POIDS NET (Kg)	COLISAGE (NR)	CPS (daN.m)
MV63130	LG1000	PENDARD L121 TRISIGMA PERF LG1000 Z275	990	5.009	10	450
MV63133	LG2500	PENDARD L121 TRISIGMA PERF LG2500 Z275	2470	10.980	10	380



Matière platine: ACIER 6.00 S235 JR - NF EN 10025-2/10051
 Revêtement platine: EZ (Fe/Zn/A) - NF EN ISO 2081
 Matière profil: FEUILLE 2.00 S250GD + Z275 - NF EN 10143/10346
 Revêtement profil: Z275 - NF EN 10346
 CPS: Charge Pratique de Sécurité - NF EN ISO 61537

 	DESIGNATION:				
	PENDARD L121 TRISIGMA PERF Z275				
Propriété GEWISS France - Toute reproduction et utilisation tierce requièrent l'accord écrit de GEWISS France					
Usine de Liernais BP 1 21430 LIERNAIS TEL.: 03.80.90.51.00 FAX: 03.80.84.43.66	DESSINE PAR:	BERGEROT D.	VERIFIE PAR:	LEGUY C.	FORMAT A4 H
	DATE:	26/05/203	ECHELLE:	1:5	
	N°:	MV63130 et MV63133_01			