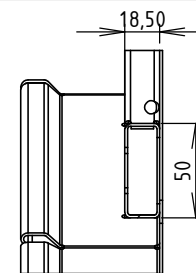
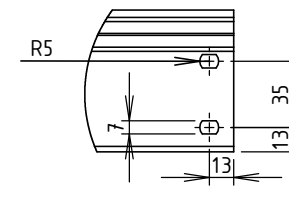


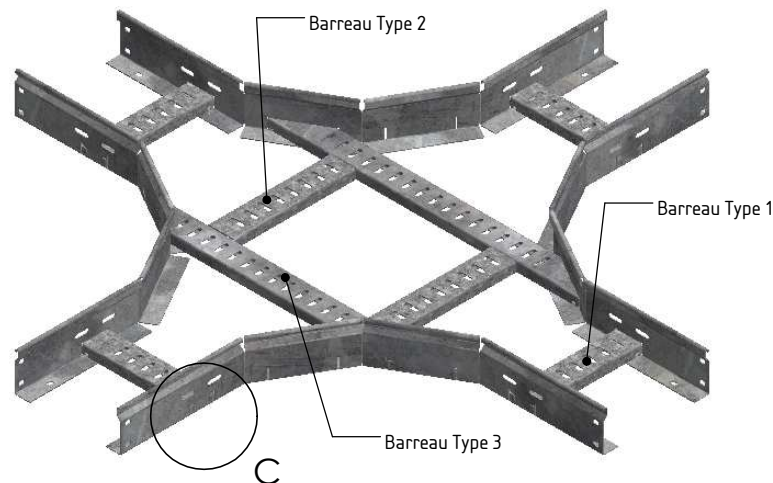
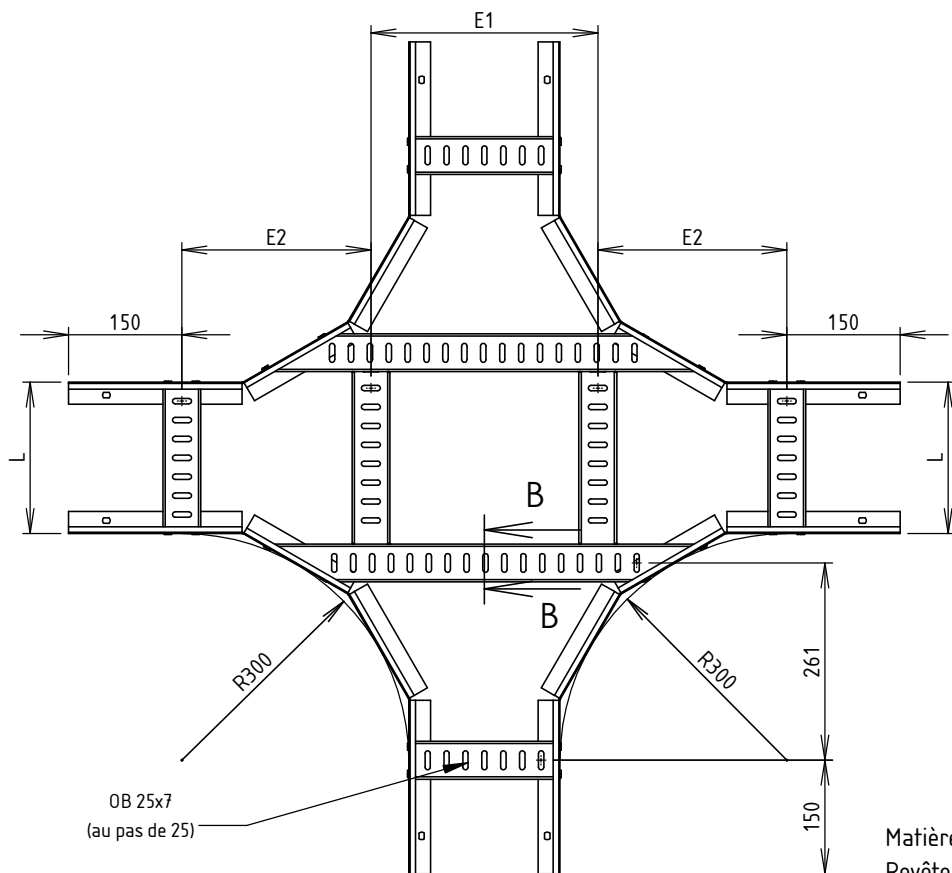
A



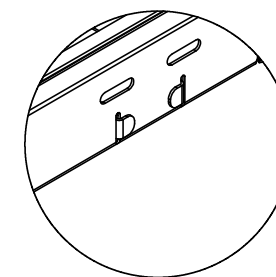
COUPE B-B
ECHELLE 1 : 4



DÉTAIL A
ECHELLE 1 : 4



DÉTAIL C
ECHELLE 1 : 4



Matière: TÔLE GALVA 1.50 DX51D + Z275
Revêtement: Z275 - NF EN 10346

CODE	L (mm)	L1 (mm)	E1 (mm)	E2 (mm)	Poids (kg)	NB barreaux Type 2
MV97101	100	1000	250	225	5.66	2
MV97102	200	1100	300	250	6.40	2
MV97103	300	1200	300	300	7.60	2
MV97104	400	1300	250	250	8.68	3
MV97105	500	1400	275	275	9.53	3
MV97106	600	1500	300	300	10.45	3

GEWISS

MAVIL

Usine de Liernais
BP 1
21430 LIERNAIS
TEL.: 03.80.90.51.00
FAX: 03.80.84.43.66

DESIGNATION:

CROIX EAC ML75 Z275

DESSINE PAR:	BONIN G.	VERIFIE PAR:	BERGEROT D.	FORMAT A4 H
DATE:	16/10/2015	ECHELLE:	1:10	
N°:	MV97101 à MV97106			