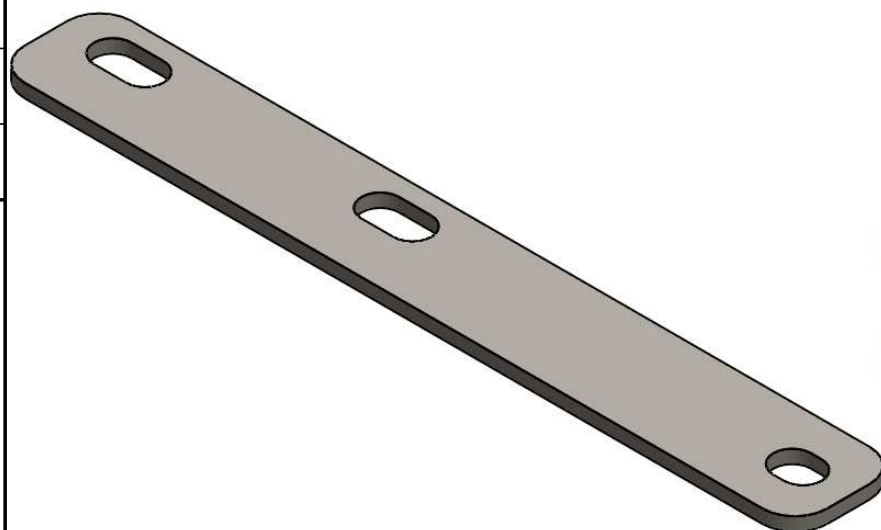




$v_x = 11.008\text{mm}$
 $v_y = 1.25\text{mm}$
 $s = 41.25\text{mm}^2$
 $I_{xx} = 1418.44\text{mm}^4$
 $I_{yy} = 21.48\text{mm}^4$
 $I_{xx}/v_x = 128.85\text{mm}^3$
 $I_{yy}/v_y = 17.19\text{mm}^3$



Poids net: 0.057 Kg
 Matière: FEUILLE 2.50 S235 JR
 Revêtement: GAC - Galvanisation à chaud par immersion selon NF EN 1461
 Dimensionnel garanti avant galvanisation
 Colisage: NR

 	DESIGNATION:			FORMAT
	ECLISSE 1/2 COMPAS BRNHL35/50 LG150 GAC			
Usine de Liernais BP 1 21430 LIERNAIS TEL.: 03.80.90.51.00 FAX: 03.80.84.43.66	DESSINE PAR:	BERGEROT D.	VERIFIE PAR:	LEGUY C.
	DATE:	25/04/2019	ECHELLE:	1:1
	N°:	MVC0520EA_01		